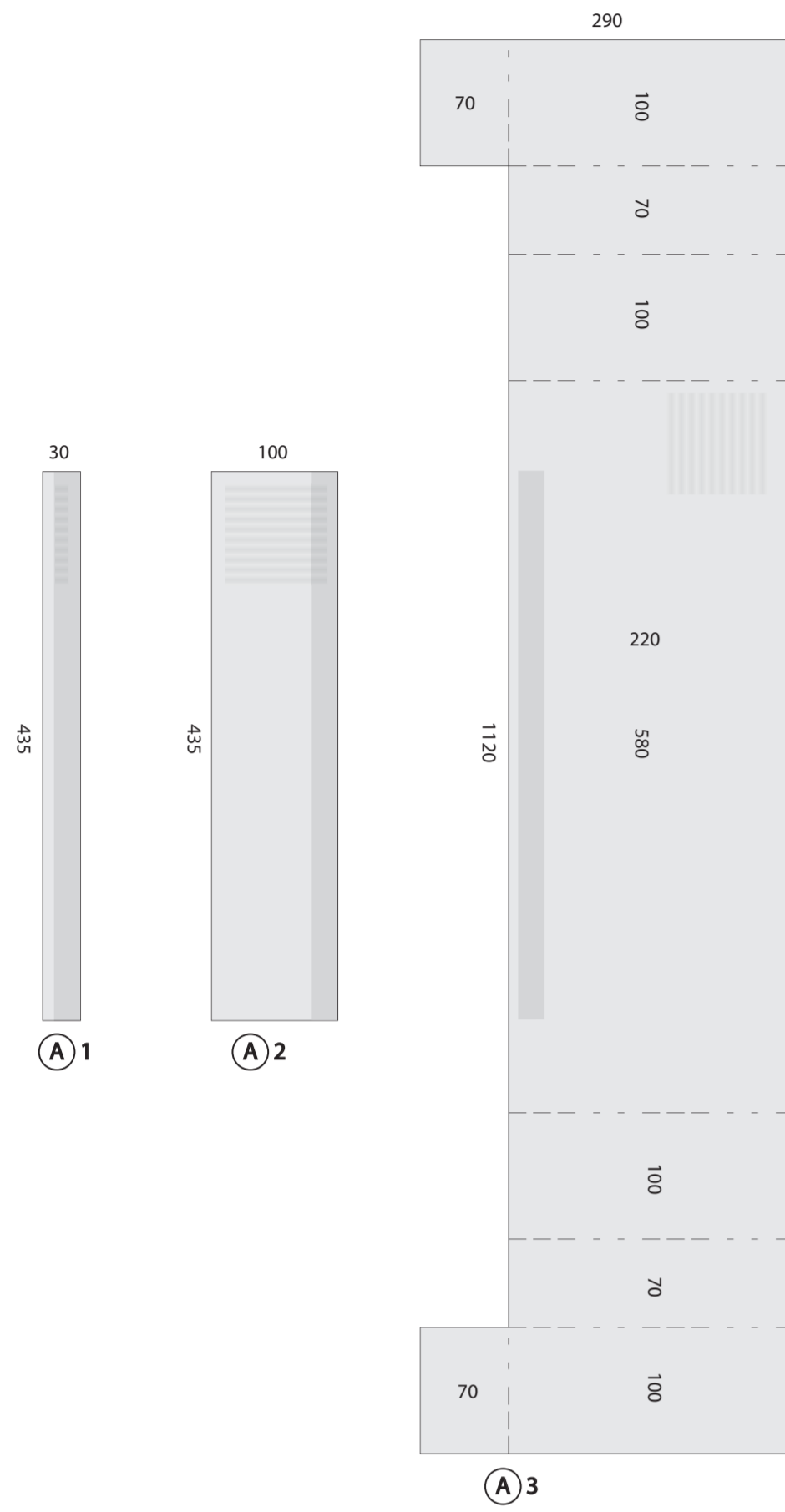
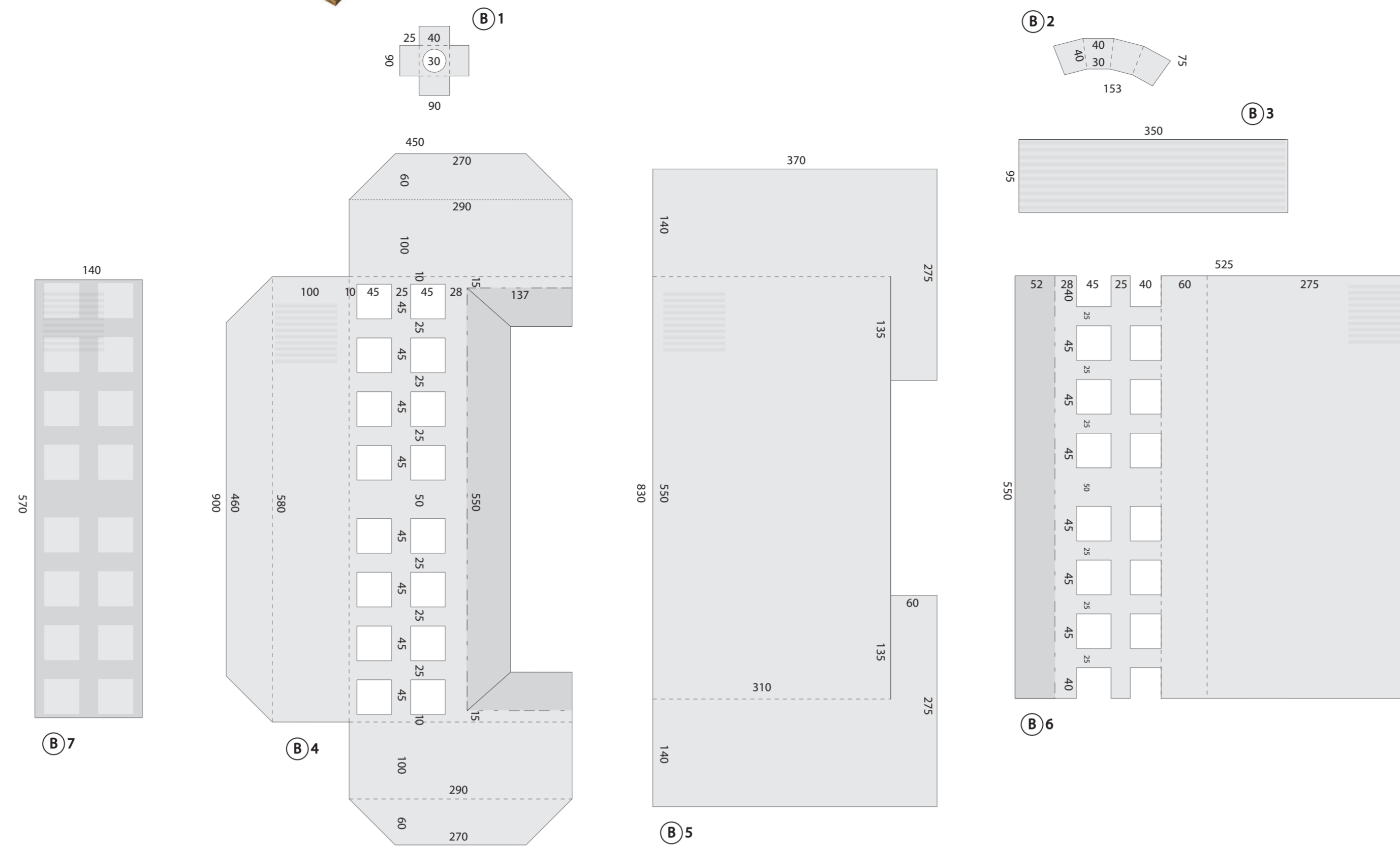


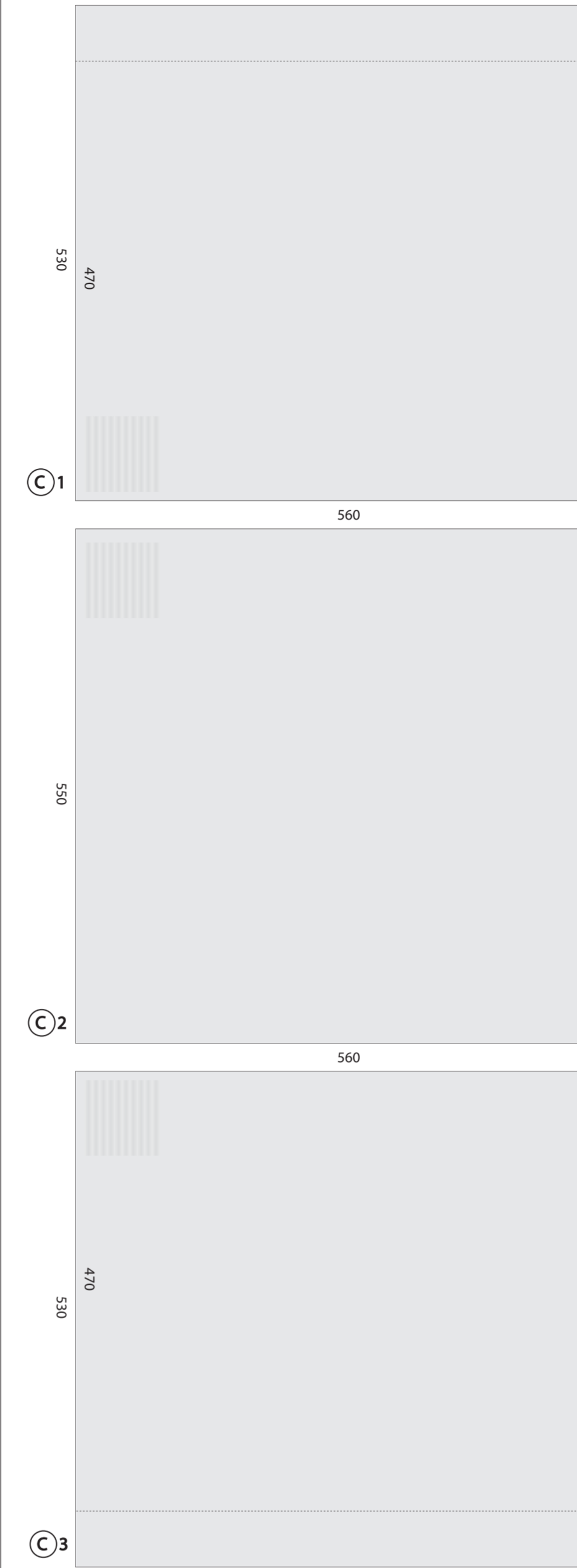
A Front Steps



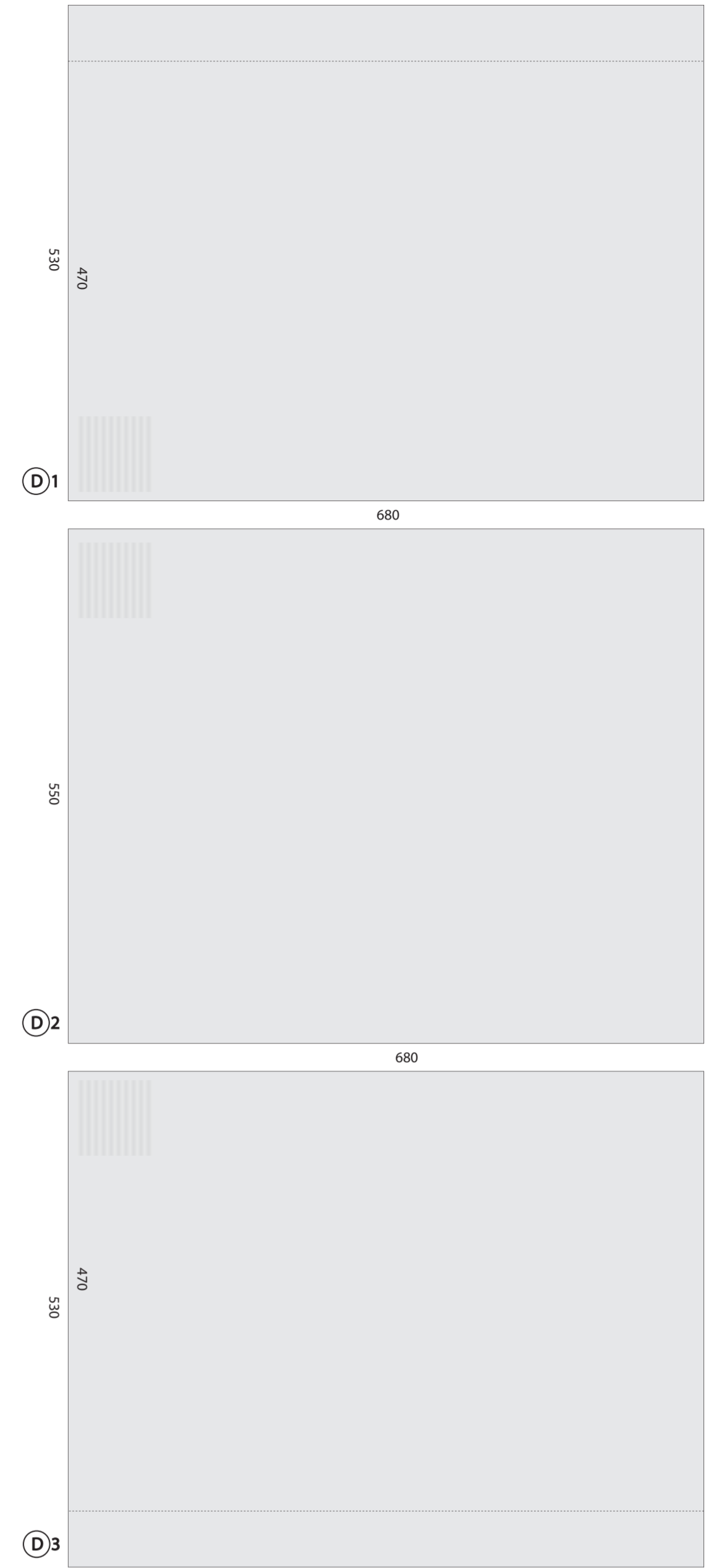
B Entrance (front and back)



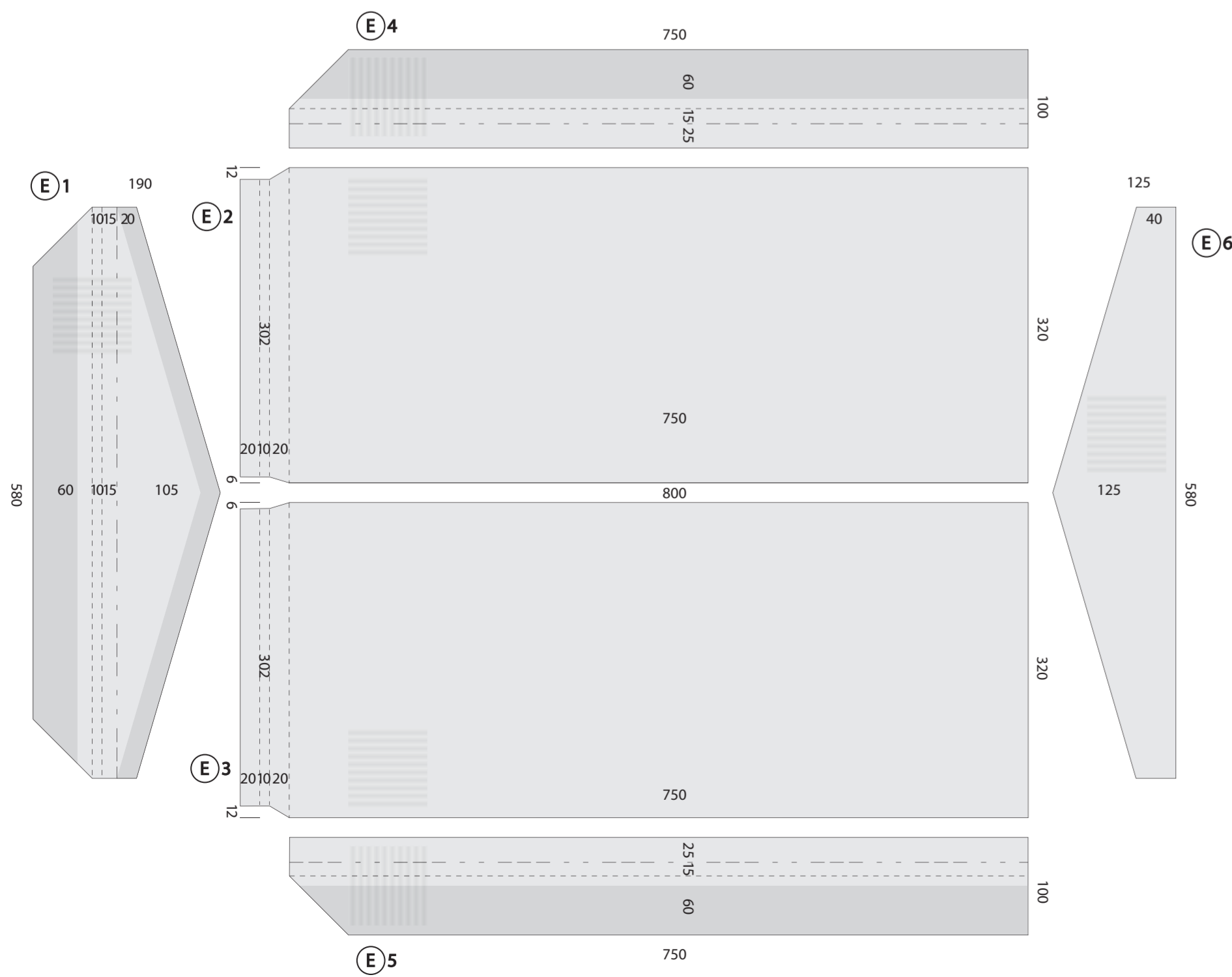
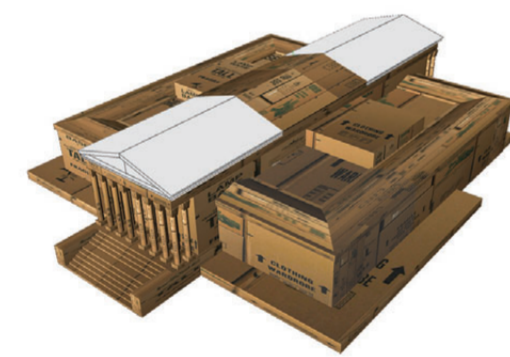
C Main Building (front and back)



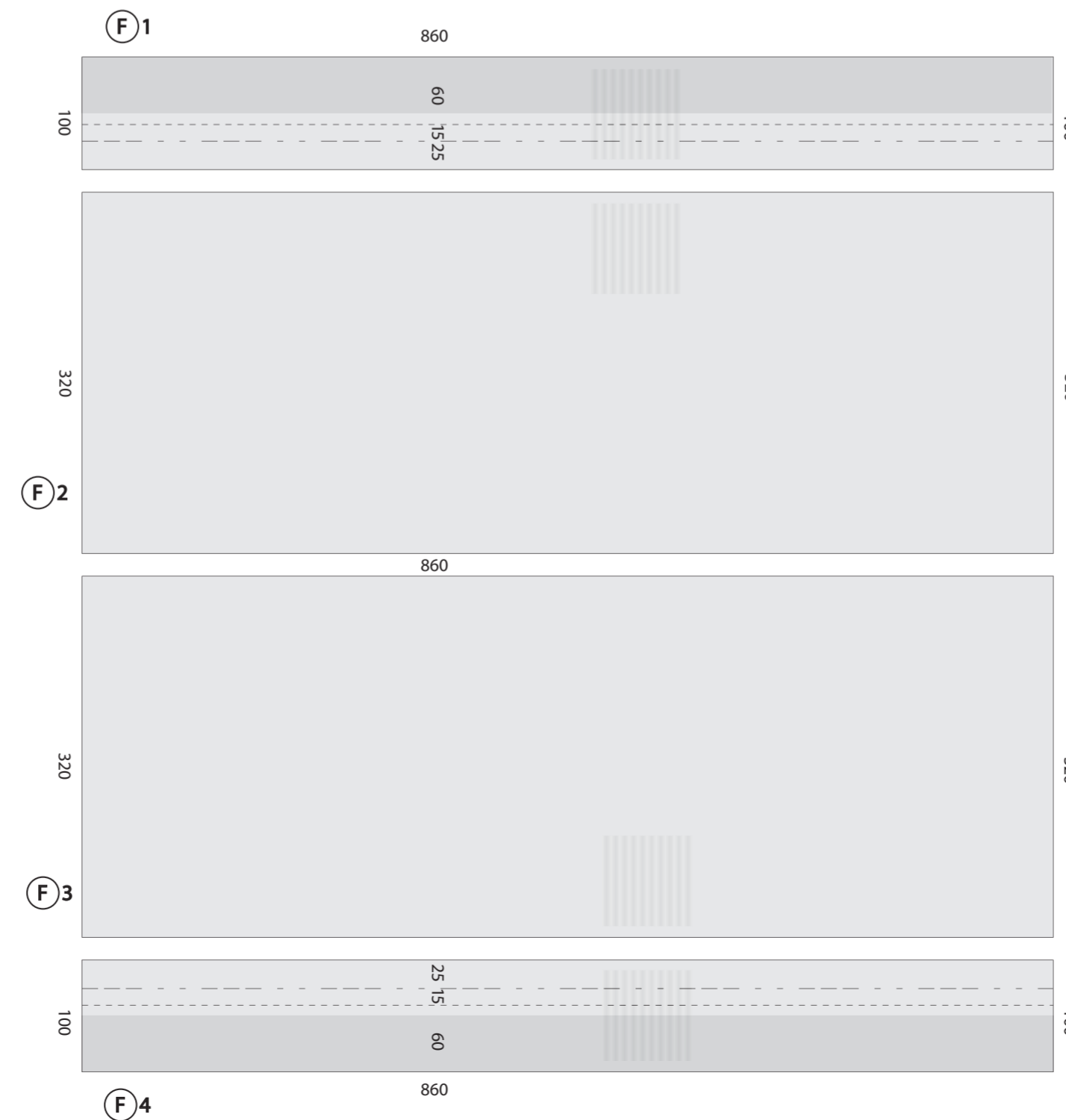
D Main Building (middle)



E Main Roof (front and back)



F Main Roof (middle)



A Front Steps

- Steps (A1) x 12 (435mm x 30mm)
- Middle Step (A2) x 1 (435mm x 100mm)
- Balustrade (A3) x 1 (1120mm x 290mm)

B Entrance (front and back)

- Column Base (B1) x 32 (90mm x 90mm)
- Column Capital (B2) x 32 (75mm x 153mm)
- Column (B3) x 32 (95mm x 350mm)
- Floor (B4) x 2 (900mm x 450mm)
- Back Wall (B5) x 2 (830mm x 370mm)
- Ceiling (B6) x 2 (550mm x 525mm)
- Floor Cover (hidden) (B7) x 2 (570mm x 140mm)

C Main Building (front and back)

- Side (C1) x 2 (530mm x 560mm)
- Top (C2) x 2 (550mm x 560mm)
- Side (C3) x 2 (530mm x 560mm)

D Main Building (middle)

- Side (D1) x 1 (530mm x 680mm)
- Top (D2) x 1 (550mm x 680mm)
- Side (D3) x 1 (530mm x 680mm)

E Main Roof (front and back)

- Tympanum (E1) x 2 (580mm x 190mm)
- Roof (E2) x 2 (320mm x 800mm)
- Roof (E3) x 2 (320mm x 800mm)
- Roof Side (E4) x 2 (100mm x 750mm)
- Roof Side (E5) x 2 (100mm x 750mm)
- Roof Support (hidden) (E6) x 2 (580mm x 125mm)

F Main Roof (middle)

- Roof Side (F1) x 1 (100mm x 860mm)
- Roof (F2) x 1 (320mm x 860mm)
- Roof (F3) x 1 (320mm x 860mm)
- Roof Side (F4) x 1 (100mm x 860mm)

RES PUBLICA

Wolfgang Weileder, 2012

Construction manual for a 1:50 scale cardboard model of the United States Supreme Court Building in Washington DC.

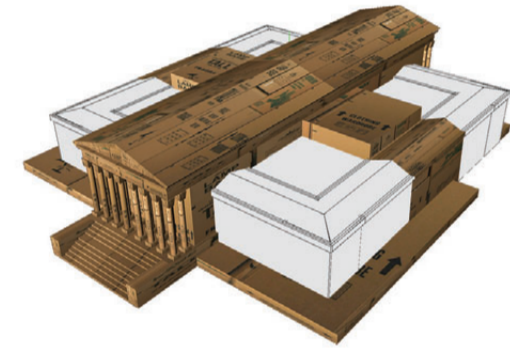
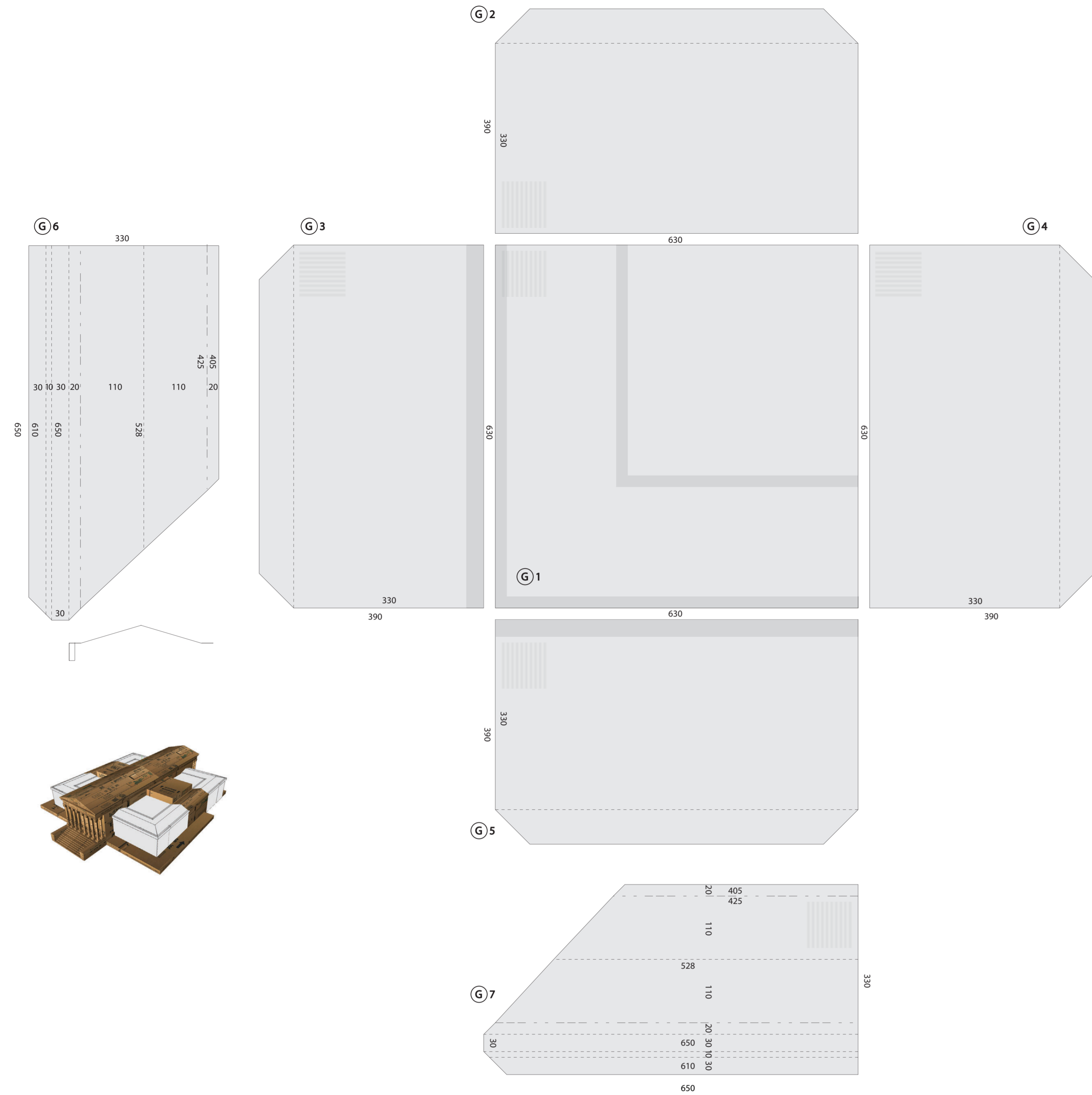
This manual is part of the site-specific artwork Res Publica by Wolfgang Weileder commissioned for the 5 x 5 Public Art Festival, Washington DC, 20th March – 28th April 2012.

Res Publica is curated by Grit&Pearl and funded by the DC Commission on the Arts & Humanities, DC Creates! Public Art Program.

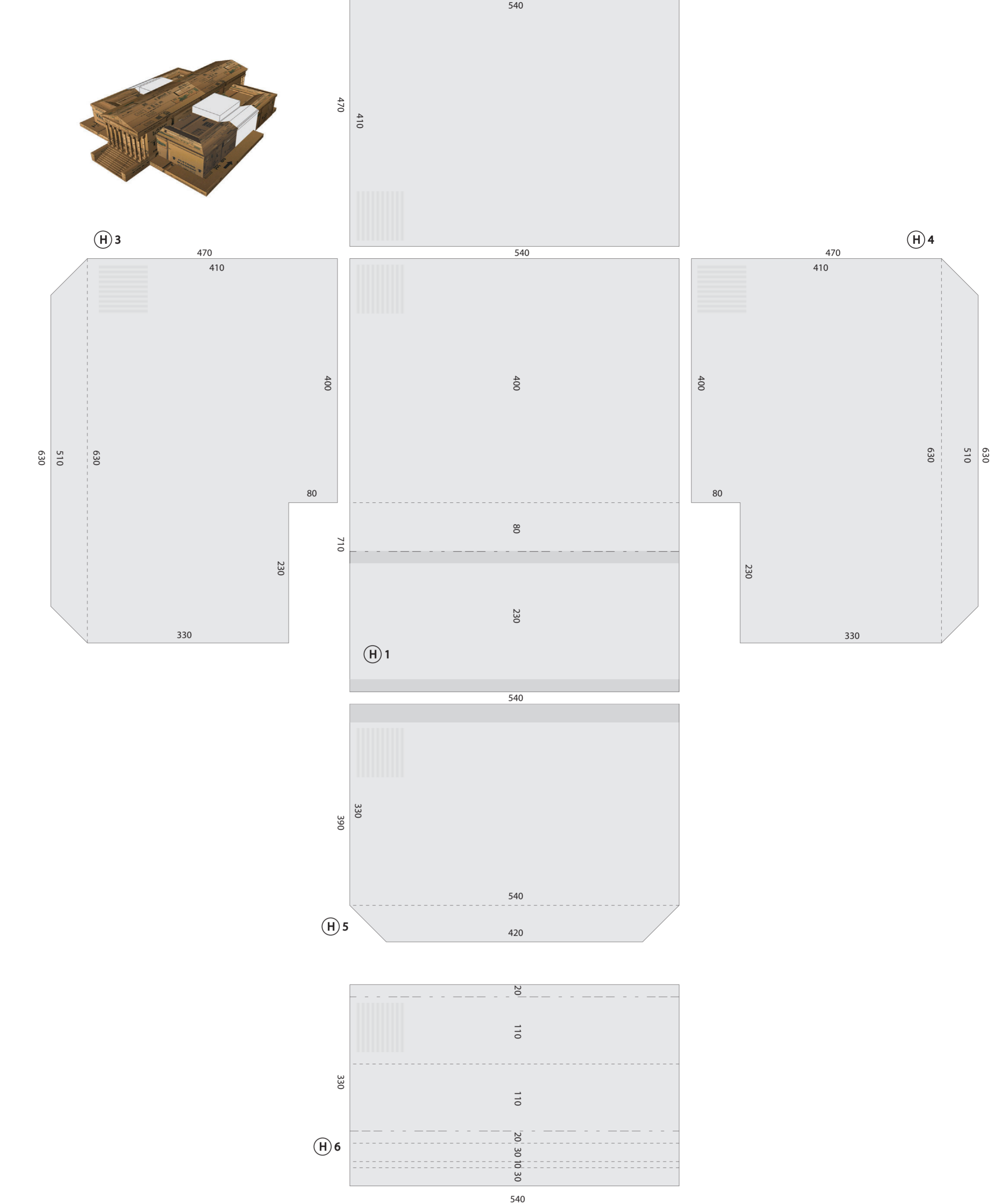
www.the5x5project.com
www.wolfgangweileder.com



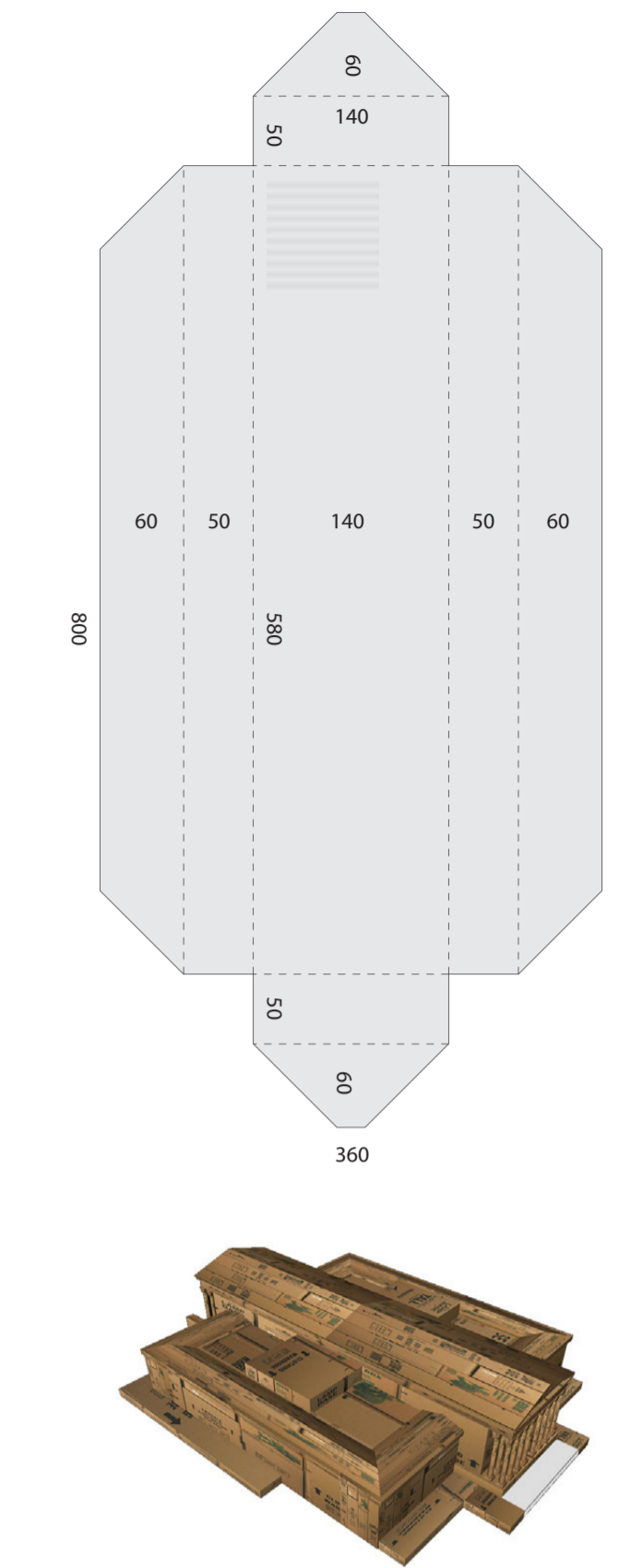
G Corner Building



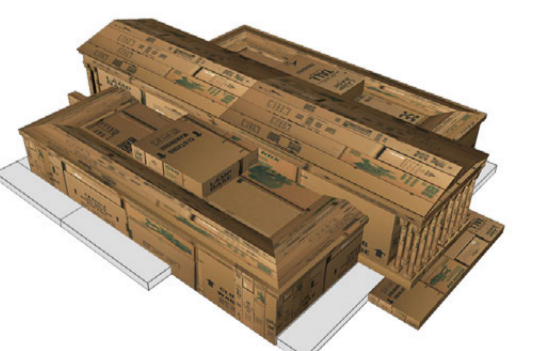
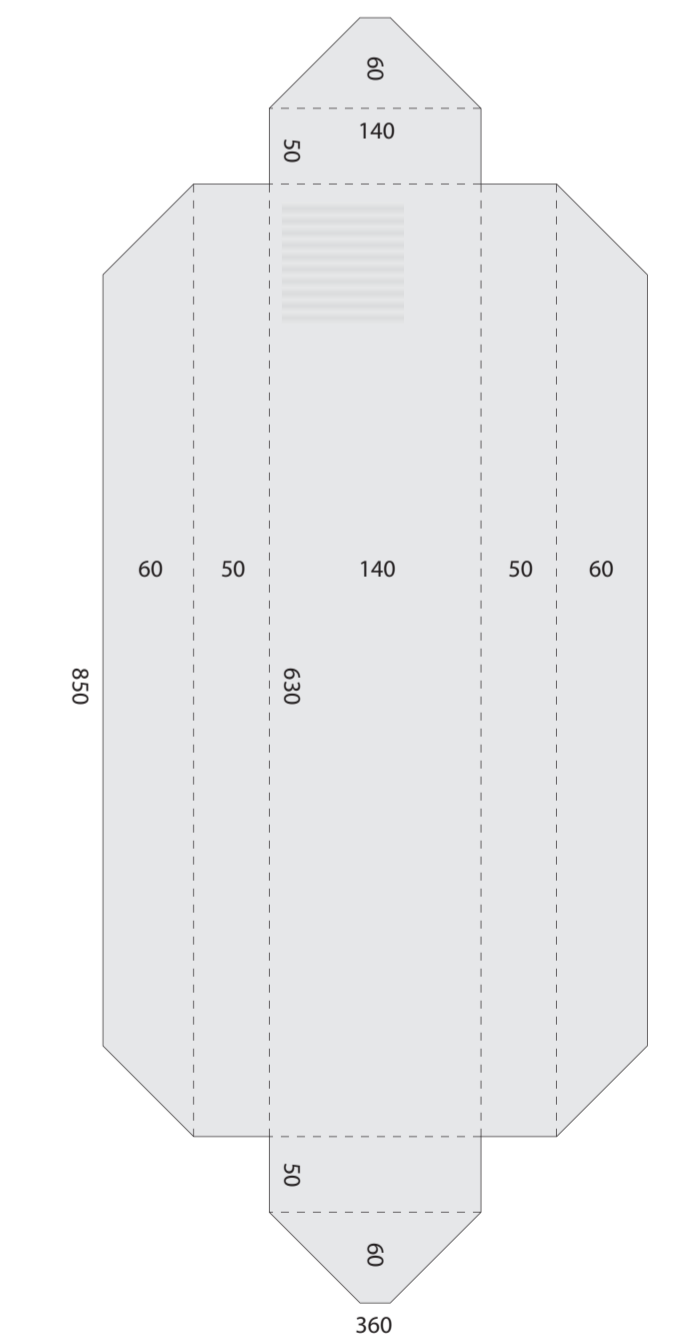
H Side Building



I Back Entrance Base (front)



K Front and Side Base



G Corner Building

- Top **G1** x4 (630mm x 630mm)
- Side **G2** x4 (390mm x 630mm)
- Side **G3** x4 (630mm x 390mm)
- Side **G4** x4 (630mm x 390mm)
- Side **G5** x4 (390mm x 630mm)
- Roof **G6** x4 (650mm x 330mm)
- Roof **G7** x4 (330mm x 650mm)

H Side Building

- Top **H1** x2 (710mm x 540mm)
- Side **H2** x2 (470mm x 540mm)
- Side **H3** x2 (630mm x 470mm)
- Side **H4** x2 (630mm x 470mm)
- Side **H5** x2 (390mm x 540mm)
- Roof **H6** x2 (330mm x 540mm)

- I** Back Entrance Base (front) x1 (800mm x 360mm)

- J** Back Entrance Base (side) x2 (490mm x 360mm)

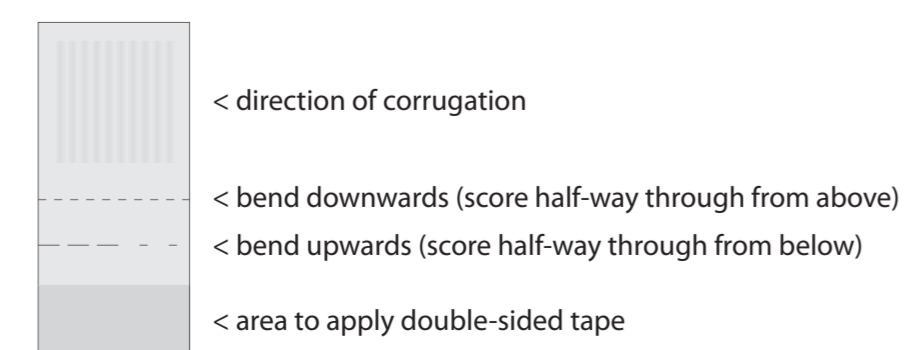
- K** Front and Side Base x8 (850mm x 360mm)

Assembly Instructions

The model should be made from found or recycled cardboard. The cutting sheet provides a complete list of individual components required to construct one model, including numbers of each component. The individual components are assembled with 2" brown paper gummed tape.

- Tools required:
- craft knife
 - scissors
 - cutting board
 - straight metal edge
 - metric tape measure (all dimensions are in Millimeters)
 - water bowl and sponge

- Materials required:
- recycled cardboard
 - 2" brown paper gummed tape
 - 1" double sided tape



J Back Entrance Base (side)

